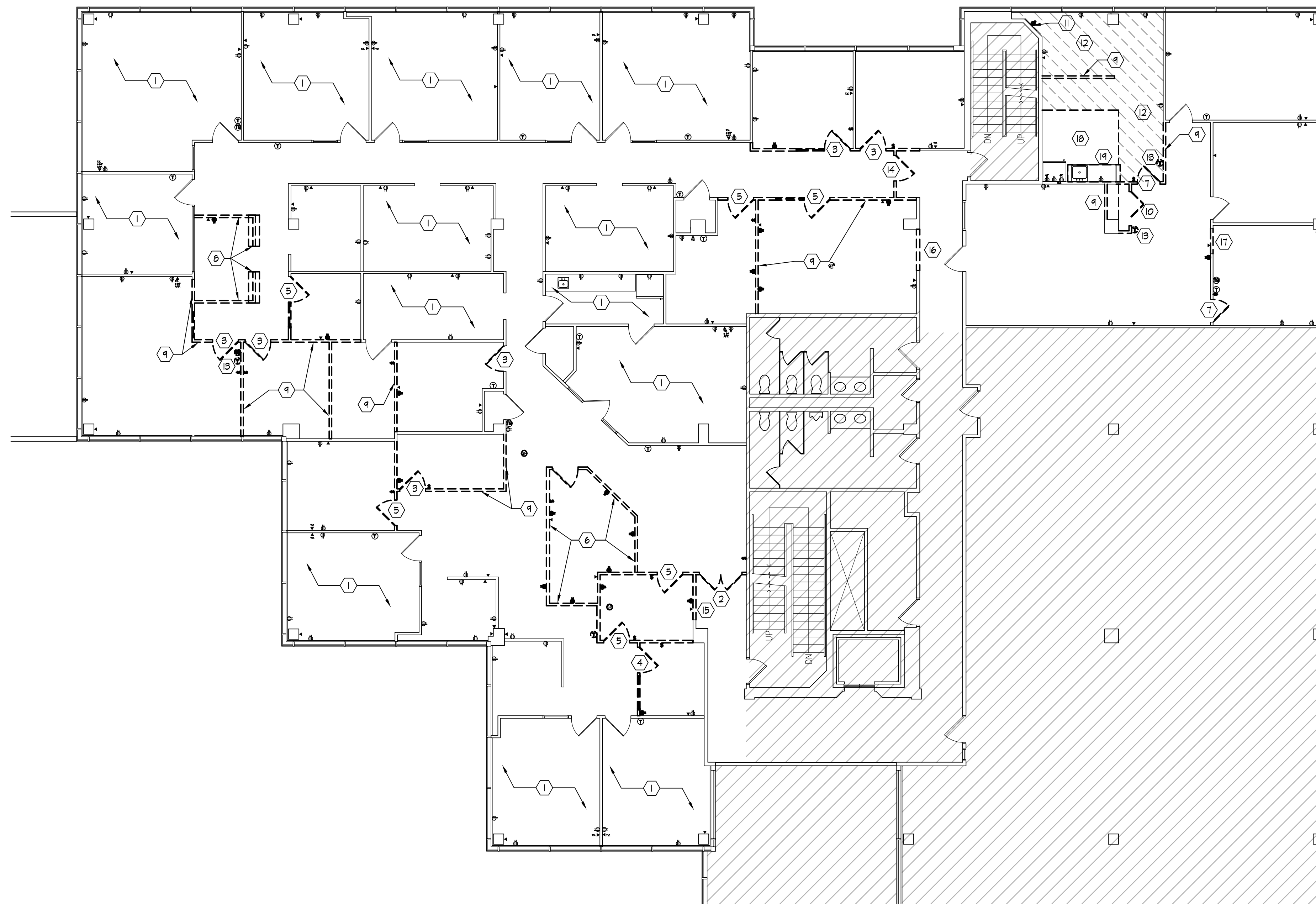


**DEMOLITION PLAN GENERAL NOTES:**

- A. CONTRACTOR SHALL VERIFY FIELD CONDITIONS AND NOTIFY TENANT OF ALL DISCREPANCIES PRIOR TO START OF DEMOLITION.
- B. EXISTING SPRINKLER LINES TO REMAIN, UNLESS OTHERWISE NOTED. SEE SPRINKLER DRAWINGS FOR BRANCH LINE WORK.
- C. ARRANGE AND PAY FOR DISCONNECTING, REMOVING AND CAPPING UTILITY SERVICES WITHIN AREAS OF DEMOLITION. DISCONNECT AND STUB OFF ALL UTILITIES AFFECTED BY THE DEMOLITION WORK. NOTIFY THE AFFECTED UTILITY COMPANY AND BUILDING MANAGER IN ADVANCE AND OBTAIN APPROVAL PRIOR TO THIS WORK.
- D. PROVIDE & MAINTAIN TEMPORARY LIGHTING & POWER AS REQUIRED FOR THE DEMOLITION & CONSTRUCTION PHASES.
- E. EXCEPT WHERE NOTED OTHERWISE, LEGALLY REMOVE ALL DEMOLISHED MATERIALS OFF SITE IMMEDIATELY.
- F. DEMOLISH IN AN ORDERLY AND CAREFUL MANNER AS REQ'D TO ACCOMMODATE NEW WORK, INCLUDING THAT REQUIRED FOR CONNECTION TO THE EXISTING BUILDING. PROTECT EXISTING STRUCTURAL MEMBERS, PHASE DEMO IN ACCORDANCE WITH CONSTRUCTION SCHEDULE.
- G. PERFORM DEMOLITION IN ACCORDANCE WITH APPLICABLE AUTHORITIES HAVING JURISDICTION.
- H. REPAIR ALL DEMOLITION PERFORMED IN EXCESS OF THAT REQ'D, AT NO COST TO THE OWNER.
- I. HVAC CONTRACTOR TO INSPECT EXISTING CONDITIONS PRIOR TO DEMOLITION AND DETERMINE WHETHER ANY COMPRESSOR REFRIGERANT LINES ARE PRESENT THAT MUST BE PROPERLY DRAINED (TO E.P.A. STD.) PRIOR TO DEMOLITION.
- J. DEMOLISH WITHOUT EXCESS NOISE OR VIBES, SO AS NOT TO DISRUPT BUSINESS OF ADJACENT TENANTS. ANY LOAD DEMOLITION TO BE COORDINATED WITH LANDLORD'S REPRESENTATIVE.
- K. ERECT AND MAINTAIN DUST-PROOF PARTITIONS AND CLOSURES AS REQUIRED TO PREVENT SPREAD OF DUST OR FUMES TO OCCUPIED PORTIONS OF THE BUILDING.

**DEMOLITION PLAN KEYED NOTES:**

- 1 NO WORK TO BE COMPLETED IN THIS AREA
- 2 G.C. TO REMOVE EXISTING GLASS ENTRY DOORS AND HARDWARE TO BE RELOCATED. G.C. TO MAINTAIN INTEGRITY OF MATERIALS. MATERIALS TO BE REUSED REFER TO SHEET A100
- 3 G.C. TO REMOVE EXISTING DOOR AND MILLWORK TO BE RELOCATED. G.C. TO MAINTAIN INTEGRITY OF MATERIALS. MATERIALS TO BE REUSED REFER TO SHEET A100
- 4 G.C. TO REMOVE EXISTING DOOR, SIDELIGHT AND MILLWORK TO BE RELOCATED. G.C. TO MAINTAIN INTEGRITY OF MATERIALS. MATERIALS TO BE REUSED REFER TO SHEET A100
- 5 G.C. TO REMOVE EXISTING DOOR, MILLWORK AND/OR SIDELIGHT. G.C. TO MAINTAIN INTEGRITY OF MATERIALS. G.C. TO COORDINATE THE DISPOSAL OR REUSE OF MATERIALS WITH STIFEL NICOLAUS REPRESENTATIVE.
- 6 G.C. TO REMOVE EXISTING CASE AREA. G.C. TO MAINTAIN INTEGRITY OF MATERIALS. G.C. TO COORDINATE THE DISPOSAL OR REUSE OF MATERIALS WITH STIFEL NICOLAUS REPRESENTATIVE.
- 7 G.C. TO REMOVE DOOR AND FRAME TO BE RELOCATED. G.C. TO MAINTAIN INTEGRITY OF MATERIALS. REFER TO SHEET A100
- 8 G.C. TO REMOVE TO REMOVE EXISTING HALF WALL AND MILLWORK COMPLETE. G.C. TO REMOVE ALL RELATED ELECTRICAL, VOICE AND DATA. G.C. TO PATCH AND REPAIR FLOORING AS REQUIRED.
- 9 G.C. TO REMOVE EXISTING WALL COMPLETE. G.C. TO REMOVE ALL EXISTING ELECTRICAL, VOICE AND DATA AS REQUIRED. G.C. TO PATCH AND REPAIR CEILING AND FLOORING AS REQUIRED.
- 10 G.C. TO REMOVE EXISTING DOOR AND SHELVING COMPLETE. G.C. TO PATCH AND REPAIR CEILING AND FLOORING AS REQUIRED.
- 11 G.C. TO REMOVE EXISTING TELEPHONE AND DATA DEMARCS AS REQUIRED. G.C. TO COORDINATE REMOVAL AND DISPOSAL WITH PROPER UTILITIES REPRESENTATIVE.
- 12 G.C. TO REMOVE EXISTING FLOORING AS REQUIRED. G.C. TO PREPARE CONCRETE SLAB TO RECEIVE TO FLOORING MATERIAL. REFER TO SHEET A100.
- 13 G.C. TO REMOVE THERMOSTATS AND PREPARE THERMOSTATS TO BE RELOCATED. REFER TO ENGINEERING SHEETS
- 14 G.C. TO REMOVE EXISTING EXIT DOOR. G.C. TO RELOCATE PER SHEET 100
- 15 G.C. TO REMOVE EXISTING TENANT SEPARATION WALL AS REQUIRED. G.C. TO PREPARE OPENING TO RECEIVE RELOCATED GLASS ENTRY DOORS
- 16 G.C. TO REMOVE EXISTING WALL AS REQUIRED. G.C. TO PREPARE OPENING TO RECEIVE RELOCATED EXIT DOOR REFER TO SHEET A100.
- 17 G.C. TO REMOVE EXISTING WALL AS REQUIRED. G.C. TO PREPARE OPENING TO RECEIVE NEW DOOR REFER TO SHEET A100.
- 18 EXISTING VCT FLOORING TO REMAIN. G.C. TO PROTECT AND PRESERVE DURING DEMOLITION AND CONSTRUCTION. REFER TO SHEET A100.
- 19 G.C. TO MODIFY EXISTING CABINETS AND COUNTERTOP PER NEW WALL CONSTRUCTION. REFER TO SHEET A100. G.C. TO COORDINATE FINISHES WITH STIFEL NICOLAUS PROJECT MANAGER. EXISTING SINK AND PLUMBING TO REMAIN.



**1 DEMOLITION PLAN**  
SCALE: 1/8"=1'-0"

REGISTRATION SEAL

**ARCVISION**  
INCORPORATED  
ARCHITECTURE • ENGINEERING • STORE PLANNING  
SAINT LOUIS / DALLAS / LAS VEGAS / ORLANDO  
1950 CRAG ROAD, SUITE 300 ST. LOUIS, MO 63146  
PH. (314) 415-2400 FAX (314) 415-2300  
www.arcv.com

**STIFEL NICOLAUS**  
501 NORTH BROADWAY  
8th FLOOR  
ST. LOUIS, MO 63102

**STIFEL NICOLAUS**  
500 CHESTERFIELD CENTER  
CHESTERFIELD, MO  
SUITE 240 + 250

REV	DATE	DESCRIPTION	NAME

PROJECT NO: 090748  
DRAWN BY: LU  
CHECKED BY: BMW  
ISSUE DATE: 11/04/09  
DEMO FLOOR PLAN

**D100**