

ATTACHMENT 'A' OF ST. LOUIS COUNTY RULES + REGULATIONS

ANCHORAGE + SWAY BRACING MECHANICAL + ELECTRICAL SYSTEM COMPONENTS

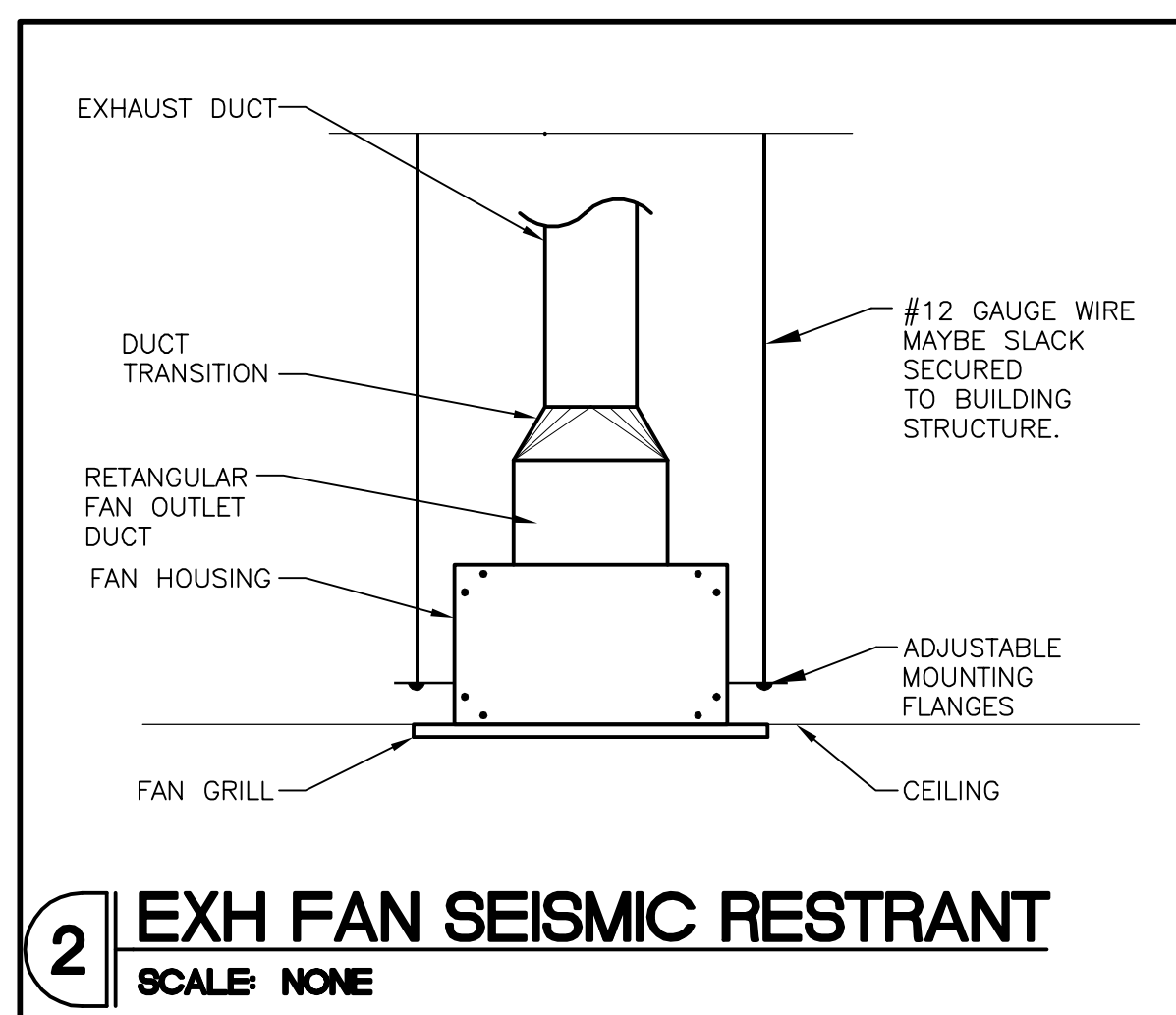
SEISMIC CODE BLOCK ON 1ST SHEET OF MECHANICAL & PLUMBING PLANS
MECHANICAL & PLUMBING EQUIPMENT COMPONENTS
EARTHQUAKE LOAD RESISTANCE

SEISMIC USE GROUP (I & II) SEISMIC DESIGN CATEGORY (D)

LISTING OF EQUIPMENT AND SYSTEM COMPONENTS	ANCHORAGE TO FLOORS, ROOF, ETC.		SWAY BRACING		LOCATION OF PROFESSIONALLY SEALED ANCHORAGE AND SWAY BRACING DETAILS			COMMENTS
	NOT PROVIDED	PROVIDED	NOT PROVIDED	PROVIDED	DRAWING NO. OR SPEC. SECTION	SHOP DRAWINGS	SEPARATE PERMIT & PLANS	
HOOD FIRE SUPPRESSION EQUIPMENT & SYSTEM COMPONENTS: N/A								
HAZARDOUS EQUIPMENT & SYSTEM COMPONENTS: N/A								
OTHER EQUIPMENT & SYSTEM COMPONENTS NEEDED FOR CONTINUED OPERATION OF SEISMIC USE GROUP III FACILITIES OR WHOSE FAILURE COULD IMPAIR THEIR CONTINUED OPERATION								N/A NO GROUP III IN THE PROJECT.
OTHER GENERAL EQUIPMENT & SYSTEM COMPONENTS Ip=1.0								
HVAC DUCTS	X		X					①
WATER PIPING	X		X					②
AIR-TERMINALS <20 LB.		X	X					③④
EQUIPMENT SUSPENDED FROM THE STRUCTURE: EF-BREAKROOM >20LBS. <56LBS.				X	M100			

NOTES:

- ① TABLE 600, EXCEPTION FOR DUCTWORK "b" REFER TO DWG M2.
- ② TABLE 600, EXCEPTION 3C - DUCTILE PIPING 3" OR LESS (DESIGN CAT. D)
- ③ COMPONENTS SHALL BE POSITIVELY ATTACHED WITH MECHANICAL FASTENERS.
- ④ REFER TO AIR DEVICE SCHEDULE-NOTE 5.



AIR DEVICE SCHEDULE

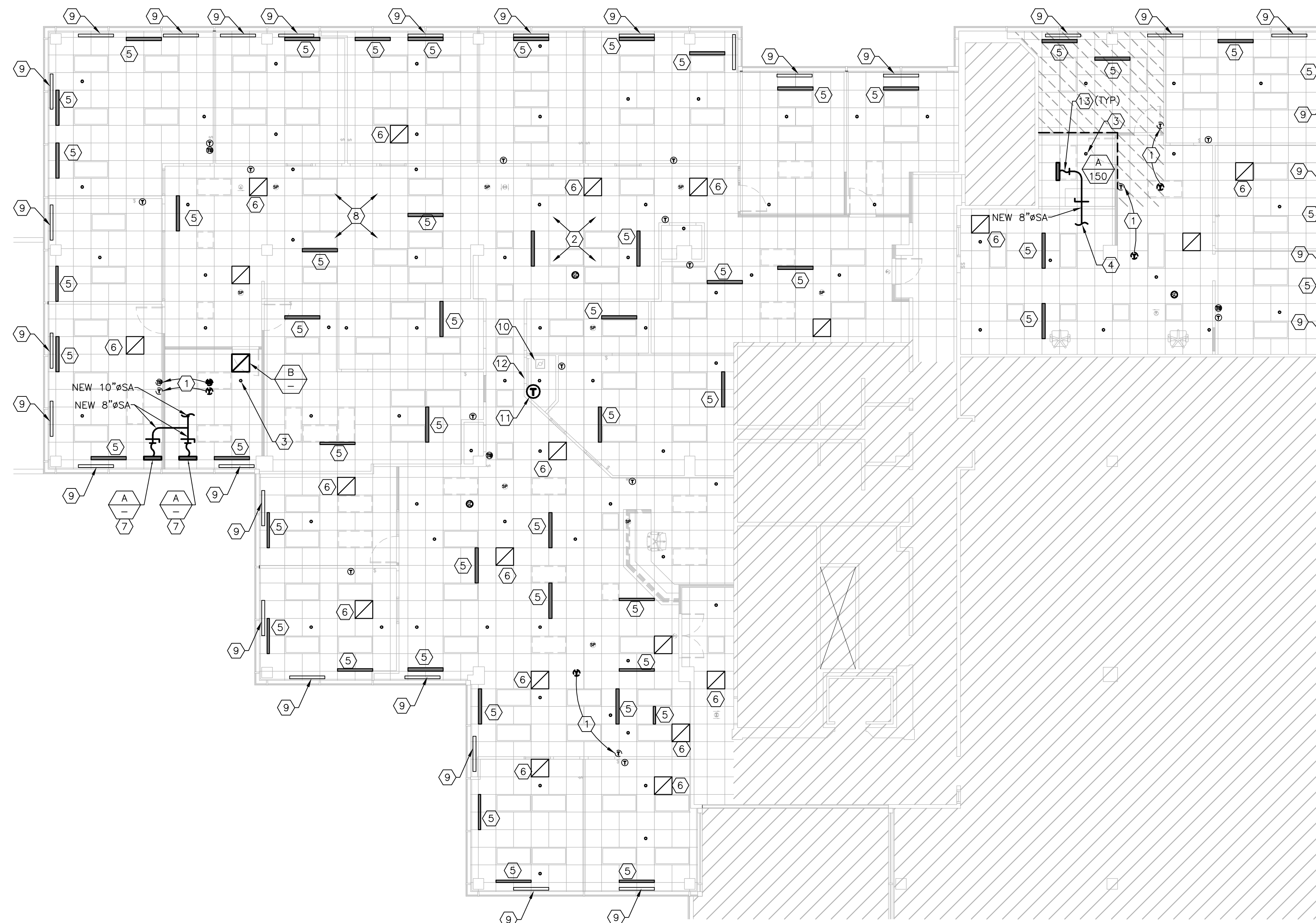
PLAN MARK	QTY.	*TITUS MODEL NO.	FACE SIZE	NECK SIZE	FLEX SIZE	TYPE	NOTES
A	3	FL-10-2-11-HT	N/A	8" RD.	8" RD.	DIFF.	1,2,3,4
B	1	PAR	24"x24"	22"x22"	N/A	R.G.	4

NOTES:
1. 1" SLOT WIDTH, 2 SLOT WITH TITUS PLENUM AND 8" INLET.
2. PROVIDE WITH BORDER TYPE 11 FOR INSTALLATION IN LAY-IN CEILING.
3. PROVIDE & INSTALL MANUAL VOLUME DAMPER
4. PROVIDE WITH "EQ" TABS TO CLIP INTO LAY-IN CEILING MODULE.

* OR APPROVED EQUAL

HVAC + SPRINKLER KEYED NOTES

- ① EXISTING THERMOSTAT/TEMPERATURE SENSOR TO BE RELOCATED TO POSITION SHOWN. MODIFY CONTROL WIRING AS REQUIRED.
- ② LANDLORD'S EXISTING SPRINKLER SYSTEM TO REMAIN WITH NO CHANGES UNLESS OTHERWISE NOTED.
- ③ EXISTING SPRINKLER HEAD TO BE RELOCATED OR NEW PROVIDED TO ACCOMMODATE INSTALLATION OF NEW WALL.
- ④ EXTEND NEW 8"Ø SUPPLY AIR DUCT AND CONNECT TO EXISTING INTERIOR ZONE. CONTRACTOR SHALL VERIFY EXACT LOCATION OF VAV BOX AND DUCTWORK IN FIELD. REBALANCE REMAINING DIFFUSER ON EXISTING VAV BOX.
- ⑤ EXISTING SUPPLY AIR DIFFUSER TO REMAIN.
- ⑥ EXISTING RETURN AIR DIFFUSER TO REMAIN.
- ⑦ REMOVE EXISTING 48" LONG DIFFUSER AND INSTALL 2 NEW 24" LONG TYPE "A" DIFFUSERS IN IT'S APPROXIMATE LOCATION TO ACCOMMODATE INSTALLATION OF NEW WALL. EXTEND NEW 8" SUPPLY DUCT FROM NEW DIFFUSER AND CONNECT TO EXISTING BRANCH DUCTWORK LEFT FROM REMOVAL OF EXISTING DIFFUSER. SPLIT AIR FROM DIFFUSER TO BE REMOVED EQUALLY BETWEEN 2 NEW DIFFUSERS.
- ⑧ EXISTING SUPPLY AIR DUCTWORK AND VAV BOX'S ABOVE CEILING TO REMAIN. FIELD VERIFY EXACT LOCATIONS AND CONDITION. CLEAN AND REPAIR/REPLACE AS REQUIRED. RE-INSULATE AS REQUIRED TO MATCH EXISTING.
- ⑨ EXISTING WALL MOUNTED ELECTRIC BASEBOARD HEATER AT EXTERIOR WALL TO REMAIN.
- ⑩ NEW NUTONE MODEL #QTXEN110 SERIES AIR CIRCULATING EXHAUST FAN FOR DATA RACK. 110 CFM, 0.7 SONES, 120/1/60, .5 AMPS, 4"Ø EXHAUST DUCT. COORDINATE WITH ELECTRICAL CONTRACTOR. FAN SHALL DISCHARGE ABOVE CEILING.
- ⑪ PROVIDE AND INSTALL A IN LINE 120V THERMOSTAT WITH LOCKING LUCITE COVER FOR FAN IN SECURE WORKROOM. COORDINATE WITH ELECTRICAL CONTRACTOR. TURN KEY OVER TO STORE MANAGER.
- ⑫ CONTRACTOR SHALL UNDERCUT EXISTING DOOR MIN 3/4" TO PROVIDE PATH FOR AIRFLOW.
- ⑬ FLEXIBLE DUCT, MAXIMUM LENGTH 5'-0" (TYPICAL). PROVIDE SMOOTH TRANSITION AND PROPER SUPPORTS PER SMACNA (TYPICAL). USE FLEXIBLE DUCT FOR FINAL RUNOUT TO DIFFUSER ONLY. REFER TO SCHEDULE FOR FLEXIBLE DUCT SIZE.



1 MECHANICAL PLAN
SCALE: 1/8"=1'-0"

REGISTRATION SEAL

ARCVISION
INCORPORATED
ARCHITECTURE • ENGINEERING • STORE PLANNING
SAINT LOUIS / DALLAS / LAS VEGAS / ORLANDO
1950 CRAIG ROAD, SUITE 300 ST. LOUIS, MO 63146
PH: (314) 415-2400 FAX: (314) 415-2300 www.arcv.com

STIFEL NICOLAUS
501 NORTH BROADWAY
8th FLOOR
ST. LOUIS, MO 63102

STIFEL NICOLAUS
500 CHESTERFIELD CENTER
CHESTERFIELD, MO
SUITE 240 + 250

REV.	DATE	DESCRIPTION

PROJECT NO: 090748
DRAWN BY: ACR
CHECKED BY: ACR
ISSUE DATE: 11/04/09
MECHANICAL PLAN

M100