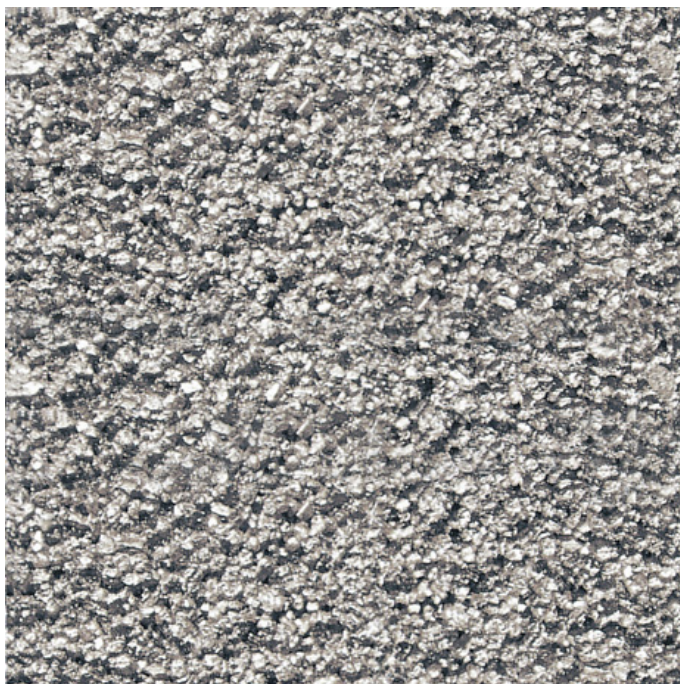


Metallic Finish

PRODUCT BULLETIN
1017602



Description

Factory-mixed, 100% acrylic polymer finish coat. METALLIC Finish has a pearlescent appearance. It utilizes uniformly-sized aggregates for a uniform fine texture. Available in a variety of colors.

Packaging

31.7-kg per 19-liter pail
(70-lbs per 5-gallon pail).

Coverage

Varies depending upon type of Finish Coat textures and substrates utilized.

Colors

Available in a wide variety of standard colors.

Uses

1. Provides a protective, weather-resistant and aesthetically pleasing surface color and texture for the Senergy Wall System.
2. Can also be utilized as a textured Finish for poured concrete or unit masonry, conventional stucco, Senergy Stucco Wall System, Senergy Cement-Board Stucco™, certain insulating concrete forms, and interior veneer plaster or gypsum wallboard.

Features

- 1 Metallic pigments.
- 2 100% Acrylic polymer chemistry.
- 3 Does not require a sealer.
- 4 Integral color.
- 5 Abrasion resistant.

Benefits

- 1 Low cost metal-panel simulation.
- 2 Long term durability and weather resistance.
- 3 Save time and money.
- 4 Reduced maintenance and recoating.
- 5 Durable.

Metallic Finish

Technical Support

Consult the Senergy Technical Services Department for specific recommendations concerning all other applications. Consult the Senergy website, www.senergy.cc, for additional information about products and systems and for updated literature.

Mixing

1. Thoroughly mix the factory-prepared METALLIC Finish with a mixer to a homogeneous consistency.
2. A small amount of clean, potable water may be added to adjust workability.
3. Additives are not permitted.
4. Close container when not in use.
5. Clean tools with soap and water immediately after use.

Application

1. Substrate shall be dry, clean, sound and free of releasing agents, paint or other residue or coatings. Verify substrate is flat, and free of fins or planar irregularities greater than 6.4 mm in 3 m (1/4" in 10').
2. Apply METALLIC Finish directly to the Senergy Base Coat/Reinforcing Mesh with a clean, stainless steel trowel.
3. Apply and level METALLIC Finish during the same operation to minimum obtainable thickness consistent with uniform coverage.
4. Maintain a wet edge on METALLIC Finish by applying and texturing continually over the wall surface.
5. Work METALLIC Finish to corners, joints or other natural breaks and do not allow material to set up within an uninterrupted wall area.
6. Float METALLIC Finish to achieve final texture.

Limitations

1. Protect Senergy materials during transportation and installation to avoid physical damage.
2. Store Senergy materials in a cool, dry place protected from freezing. Store at no less than 4°C (40°F). Protect from extreme heat and direct sunlight. Shelf life is two years when unopened and stored as directed.
3. Do not apply Senergy materials in ambient temperature below 4°C (40°F). Provide supplementary heat during installation and drying period (at least 24 hours after installation and until dry) when temperatures less than 4°C (40°F) prevail.
4. Do not apply Senergy materials to frozen surfaces.

Metallic Finish

Health and Safety

Caution

May be harmful if vapors or mist are inhaled, if absorbed through skin, or if swallowed. May cause eye, skin and respiratory tract irritation. Swallowing this product can cause kidney damage.

Precautions

Avoid getting in eyes, on skin, or on clothing. Avoid breathing vapors or mist. Wear safety glasses or goggles, impervious gloves, and clothing with long sleeves and pants. If TLV or PEL can be exceeded, wear respirator selected by a technically qualified person. Wash thoroughly after handling. Wash contaminated clothing before reuse.

Spills

Wipe up small spills with rags. Absorb larger spills with sand, vermiculite, or kitty litter; sweep up and place in a suitable container for disposal.

First Aid

Eyes

For eye contact, rinse eyes with water. Remove any contact lenses, and continue flushing with plenty of water for several minutes. Seek medical attention if irritation develops and persists.

Skin

For skin contact, wash affected areas with plenty of water, and soap if available, for several minutes. Seek medical attention if irritation develops and persists.

Internal

If inhaled, remove from area to fresh air. Seek medical attention if respiratory irritation develops or if breathing becomes difficult.

If swallowed, give 3 - 4 glasses of water, but do not induce vomiting unless directed to do so by a physician. Do not give anything by mouth to an unconscious or convulsing person. Get medical attention.

Read Material Safety Data Sheets before using these products.

Residential Policy

On one and two-family residential framed construction, Degussa Wall Systems, Inc. requires that the wall system selected be one that includes provisions for moisture drainage. The choices include Senturion® line of water managed EIFS, commercial Senerflex® Wall Systems integrating moisture management features, Senergy Stucco Wall System, and Senergy Cement-Board Stucco™ Systems. Senergy Exterior Surfacing Systems for insulating concrete forms are also acceptable. There are no exceptions to this policy. Under no circumstances will Degussa Wall Systems, Inc. warrant the use of any other system on this type of construction without expressed written authorization from Degussa Wall Systems, Inc. [Residential construction using EIFS on masonry (CMU) or poured concrete does not require the additional water management provisions described above.]

See the Senergy *Residential Policy Bulletin* for a more detailed discussion of this topic. Consult Degussa Wall Systems Technical Services Department for specific recommendations concerning all other applications. Consult the Senergy web-site, www.senergy.cc for additional information about products and systems and for updated literature.

Limited Warranty

Every reasonable effort is made to apply Degussa Wall Systems, Inc. exacting standards both in the manufacture of our products and in the information, which we issue concerning these products and their use. We warrant our products to be of good quality and will replace or, at our election, refund the purchase price of any products proved defective. Satisfactory results depend not only upon quality products but also upon many factors beyond our control. Therefore, except for such replacement or refund DEGUSSA WALL SYSTEMS, INC. MAKES NO WARRANTY OR GUARANTEE, EXPRESS OR IMPLIED, INCLUDING WARRANTIES OF FITNESS FOR A PARTICULAR PURPOSE OR MERCHANTABILITY, RESPECTING ITS PRODUCTS, and Degussa Wall Systems, Inc. shall have no other liability with respect thereto, including any liability for incidental or consequential damages. Any claim regarding product defect must be received in writing within thirty days (30) of the date of discovery or one (1) year from the date of shipment which ever is less. No claim will be considered without such written notice or after the specified time interval. User shall determine the suitability of the products for the intended use and assume all risks and liability in connection therewith. Any authorized change in printed recommendations concerning the use of our products must bear the signature of the Degussa Wall Systems Technical Service Director. Other warranties may be available from Degussa Wall Systems, Inc.; however, this warranty shall apply in the absence of any other written warranty signed by an authorized representative of Degussa Wall Systems, Inc.

Degussa Wall Systems, Inc.

3550 St. Johns Bluff Road South
Jacksonville, FL 32224-2614
Phone 800 • 221 • 9255
Fax 904 • 996 • 6300
www.senergy.cc